

A satellite view of the Earth from space, showing the Mediterranean Sea and surrounding landmasses including Europe, North Africa, and the Middle East. The Earth's curvature and the blue atmosphere are visible.

# **Turkish School in the eyes of Medical Oncologist: Turkey- Azerbaijan Oncobridge Educational Collaboration and Opportunities**

**6th CONGRES OF THE MEDITERRANEAN  
MULTIDISCIPLINARY ONCOLOGY FORUM § 3rd  
INTERNATIONAL CONGRESS ON ONCOLOGICAL  
SCIENCES**

**ANTALYA - 2019**

**Altay ALIYEV, MD**

# Disclosure

---

- No COI.



**Istanbul University  
Faculty of  
Medicine:2004-2010**



**Istanbul University  
Faculty of Medicine  
Internal Medicine  
Speciality:2011-2015**



**Bezmi Alem University  
Faculty of Medicine  
Medical Oncology  
Subspeciality:2016-219**







The State Agency on  
Mandatory Health Insurance



## TABİB

Manages healthcare  
facilities and exercises  
supervision in the area of  
implementation of  
mandatory health  
insurance

# AZERBAIJAN GLOBOCAN SOURCE

Total population

**9 923 914**

Number of new cases

**11 606**

Number of deaths

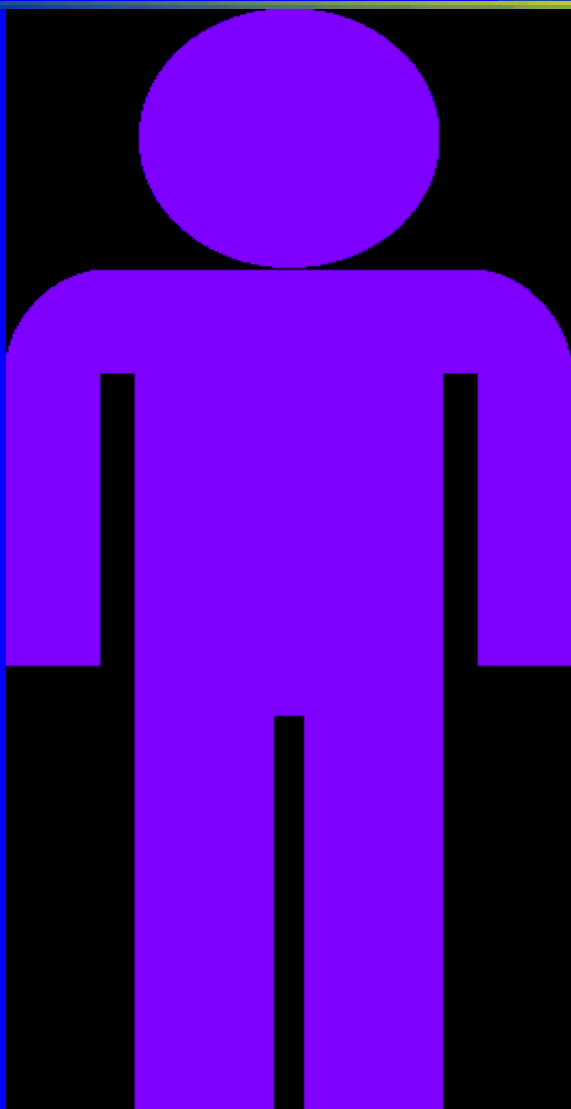
**8 133**

Number of prevalent cases (5-year)

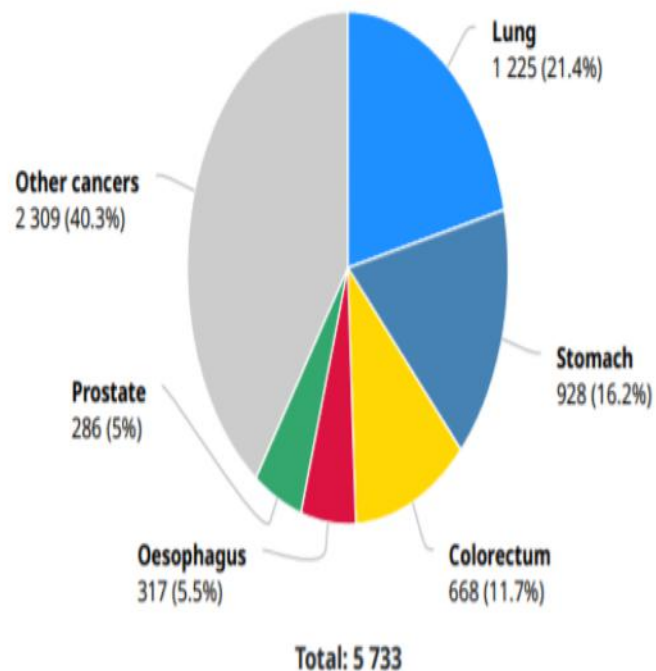
**25 091**



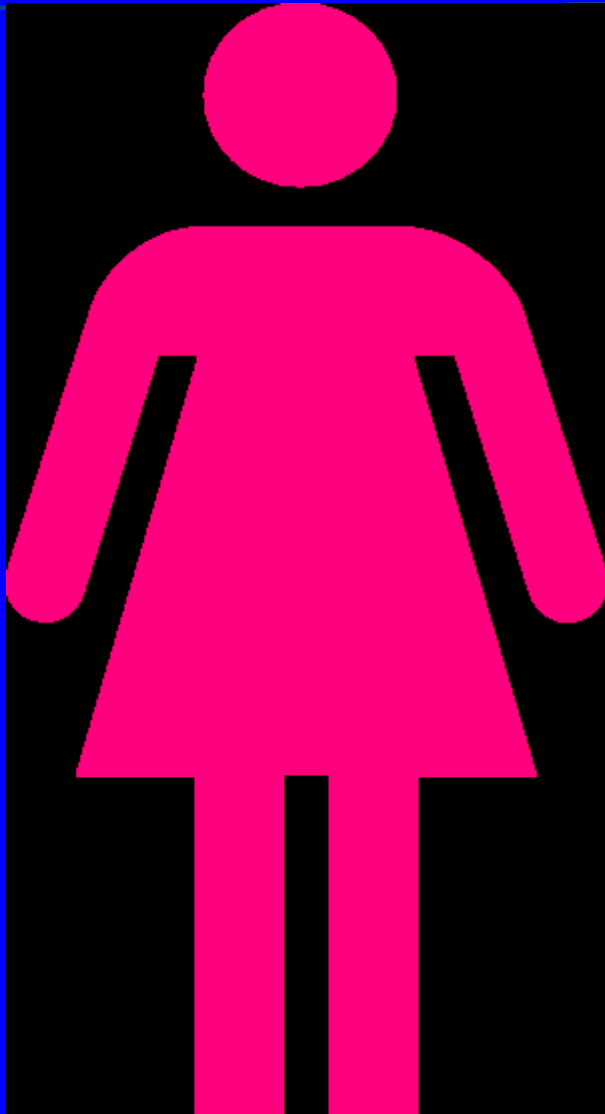
# Cancer Patients in Azerbaijan



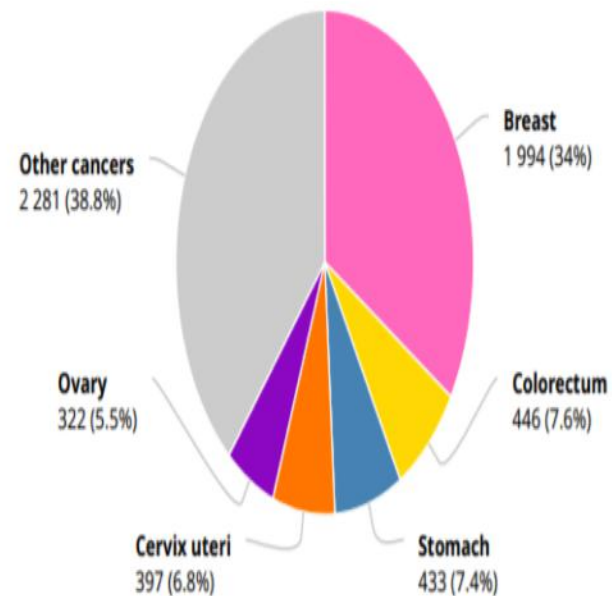
Number of new cases in 2018, males, all ages



# Cancer Patients in Azerbaijan



Number of new cases in 2018, females, all ages

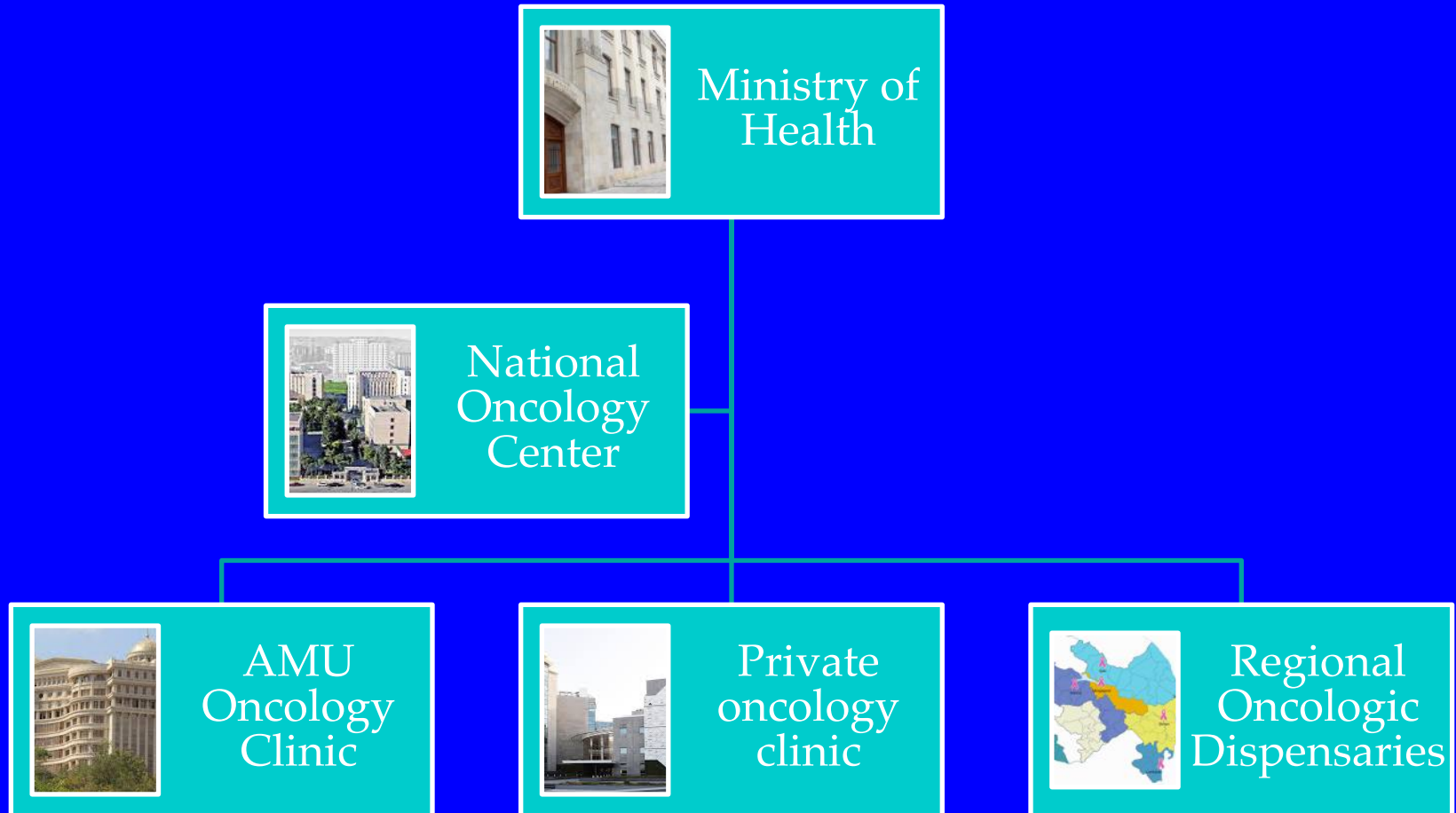


Total: 5 873

Summary statistic 2018



# Oncological Service in Azerbaijan



- Our hospital is the first private oncology center in Azerbaijan
- Comprehensive cancer treatment service is provided in our hospital
- Our goal is to obtain the JCI accreditation.



# Oncology Education in Azerbaijan

---

- Six year Medical school education
- The 5 years residency program starts with combined 2 years Medical and Radiation oncology rotations. Resident then elect one of them to pursue their career.

# ONCO-BRIDGE

---

- Created Onco-Bridge must meet, integrate, discuss and share ideas and communicate new developments in Oncology for the advancement of cancer care neighboring countries
- Aim:to expand knowledge on cancer management and to improve accessibility to cancer care for all the peoples in this area.

# DIFFICULTIES FOR ONCO-BRIDGE

- Scientific and the cultural disparities of countries
- All institutions have their own cultures and ways this also can be challenging when trying to collaborate.





# Turkish-Azerbaijan Oncobridge

---



Cultural and language  
similarities of  
Azerbaijan and Turkey



Enhances hope of  
quick cooperation.

# ONCO-BRIDGE

- Onco-Bridge should be a regional community like EORTC.
- Infrastructure of similar organizations can be taken as an example

How do we do it?



# EDUCATIONAL COLLABORATION

---

- Exchanges programs for specialists and trainees between scientific centers for creating educational activities
- Promote and support oncology meetings, courses, and conferences in the neighboring countries.



**HOSPITAL**

**Accreditation  
& Certification**

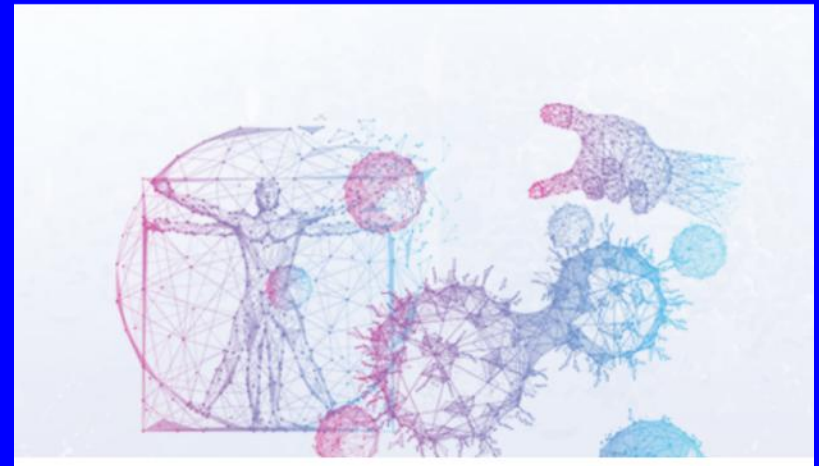
**Oncology services and clinics of the member countries can be accredited by onco-bridge commission in the future...**

- As we know best management for cancer patients are clinical trials
- Phase I and II oncological clinical trials can be initiated and conducted





- Turkish Oncology Group has 18 study groups for specific cancers
- 15th National Oncological Research Workshop is organized in this congress
- Participation of member countries for these studies can be evaluated



# Challenges

---

- Different health and education system
- Funding challenges

Implementation of a new program just can be tough. We can accomplish our goals with close collaboration and effort.

---

**“Coming together is a beginning.  
Keeping together is a progress.  
Working together is a success”**



**Henry Ford (July 30, 1863 – April 7, 1947)** *was an American industrialist, the **founder of the Ford Motor Company**, and the **sponsor of the development of the assembly line technique of mass production.***

# **Thank You !!!**

---